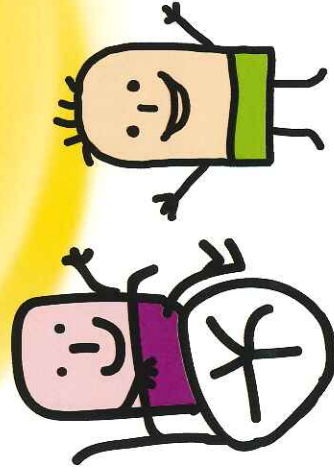


What is the Independent Support Programme?

The Independent Support Programme is a new government funded initiative to support Parent Carers and young people who are going through the Education Health and Care Plan (EHCP) process. The Independent Support Programme is free and offers completely INDEPENDENT AND IMPARTIAL information and support.



Independent Supporters can provide support which is tailored to you and the needs of your family and they work on behalf of you!

What can an Independent Supporter help me with?

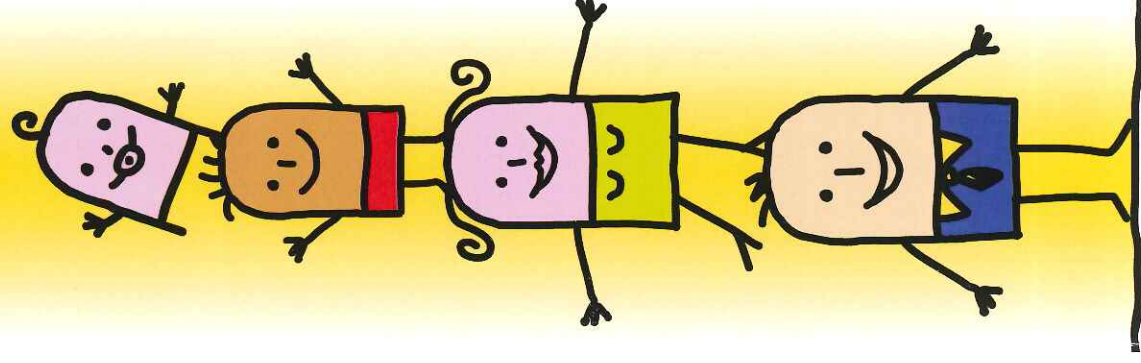
An independent supporter can work with you to support you through the EHCP assessment and planning process. This can be done through face-to-face talking, telephone help or email. Some of the things they will be able to help you with can include:

- Help filling in your "our story/My story" paperwork
- Provide information on Personal Budgets
- Help you understand the EHCP process
- Act as a named contact for you whilst you are going through your EHCP journey and help you gather any information you may need for your EHC plan.
- Support you to get additional help when you have an issue which our Independent Support team are unable to help you with (this is known as signposting).

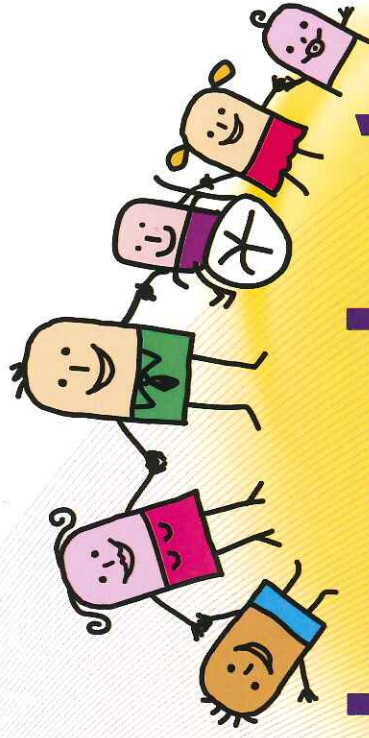
How do Independent Supporters work with the local authority and other people who might be involved in my/my child's EHCP journey?

The Independent Support Programme on the Isle of Wight is being delivered by People Matter IW, which is an independent voluntary sector organisation and outside of the Local Authority. Whilst we are working on behalf of you, it is also important that we work in partnership with other people who support you too. The Independent Support service has been developed in partnership with the Isle of Wight local authority, Parents Voice IW (IOW parent carer forum) and the SEND information, advice and support service (or SENDIASS IOW) to make sure we are able to offer a quality service to Parent Carers and young people in a good amount of time.

Although we are working together, all the information you give to the Independent Support Programme will remain confidential and will not be shared with anybody unless we have your permission to*.



*or there are any safeguarding concerns



independent support programme

FOR PARENT CARERS' CHILDREN AND YOUNG PEOPLE WITH SPECIAL EDUCATION NEEDS AND DISABILITY (SEND)

How do I ask for Independent Support?

If you would like support or information from one of our team you can request this by telephoning or emailing us directly. Our contact details are:

Email: independentsupport@peoplesmatteriw.org

Address: Isle Help Centre, High Street, Newport, PO30 1UD

Website: www.peoplesmatteriw.org

Telephone: 01983 823898 ext. 2838

Our telephone line is available Monday-Friday 9.30am until 2.30pm

.....

YOUR APPOINTMENT REMINDER

You can use the space below to note any appointments and details once you have been in touch with us!

Date of my meeting or appointment:

Where I am meeting:

Name of the person I am meeting with:

Free confidential, independent and impartial information and support to help you through the Statutory Education Health and Care plan planning and Assessment journey

Contact us on 01983 823898 ext. 2838